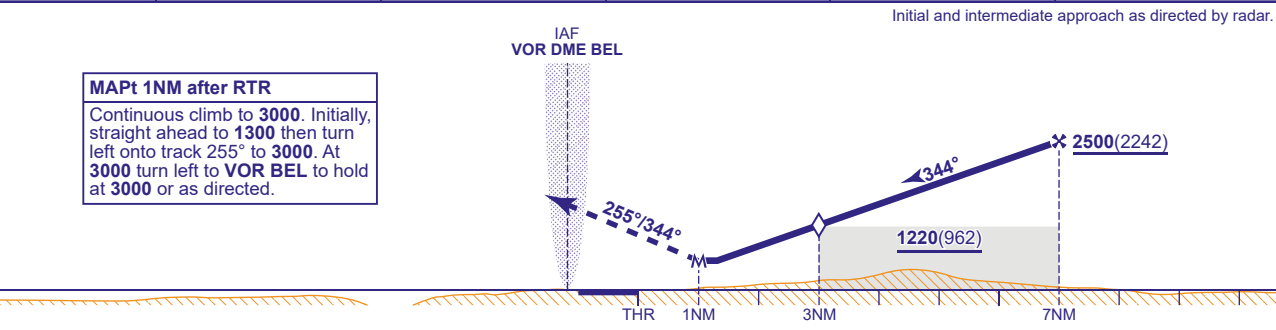


RADAR ADVISORY HEIGHTS Gradient 4.9%, 300FT/NM					
NM	6.0	5.0	4.0	3.0	2.0
ALT(HGT)	2180(1922)	1860(1602)	1540(1282)	1220(962)	900(642)



Aircraft Category		A	B	C	D	Rate of descent	G/S KT	160	140	120	100	80
OCA (OCH)	Procedure	700(442)	700(442)	700(442)	700(442)		FT/MIN	850	750	640	530	430
VM(C)OCA (OCH AAL)	Total Area	750(482)	840(572)	1180(912)	1290(1022)	RTR to MAPt	MIN:SEC	0:22	0:26	0:30	0:36	0:45

NOTE Aircraft will normally be required to hold not lower than 3000 at VOR BEL.